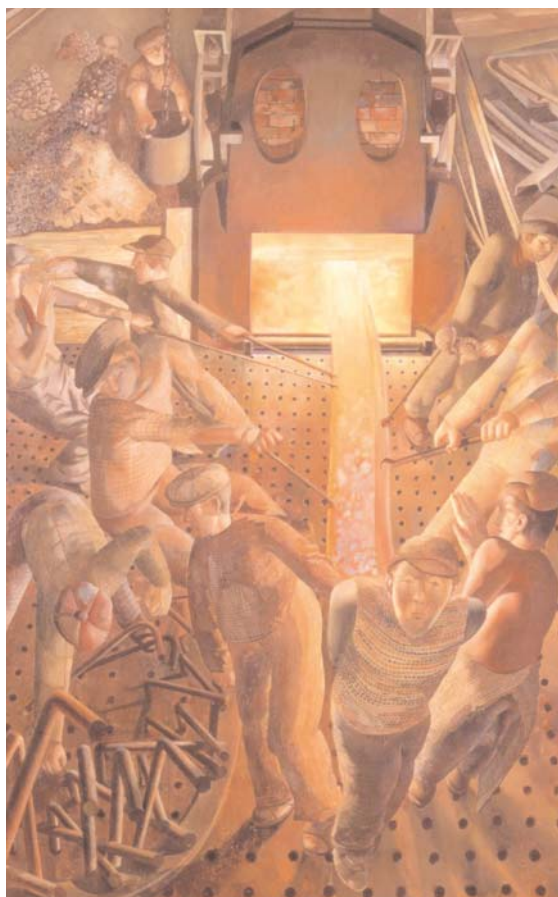


Bristol's City Museum & Art Gallery presents

Brunel and the Art of Invention

Saturday 15 April – Sunday 18 June 2006 Admission FREE



Visit Bristol's City Museum & Art Gallery to see this stunning exhibition of paintings, drawings, photography and objects from national collections. See the Thames Tunnel peep-show, stereoscopic photographs and viewer, a Mini vehicle and even a Rolls Royce Pegasus Aero engine!

Exhibition themes include; *Inventing Britain*, *The Art of Work*, *Travel & Transport* and *Brunel Artistic Engineer*.

This exhibition is ideal for exploring Brunel's influence on life in Britain from Victorian times to the present. It is relevant to the study of art & design, and history, and explores links between science, art and engineering.

Entrance to the exhibition is free, but all group visits must be booked in advance.

Exhibition preview for teachers

Wednesday 19 April 2006, 4pm–6pm

Bristol's City Museum & Art Gallery

Free to all teachers and PGCE students

This is a unique opportunity for teachers to visit *Brunel and the Art of Invention* and to trial the resources which are on offer to schools. Teachers will be able to find out more about the programme of events and workshops, and meet staff from the Museum Learning department. The exhibition includes works of national and international importance and has relevance to all schools interested in the legacy of the inventiveness of the Victorian era today. Cross-curricular resources suitable for teachers of art and history will also be available.

Advance booking is essential as places are strictly limited.

For all bookings & enquiries

Contact: Rita Youseph

Tel: 0117 922 3567

Email: rita_youseph@bristol-city.gov.uk

Bristol's City Museum & Art Gallery
Queen's Road, Bristol BS8 1RL



▀ A service provided for you by Bristol City Council ▀